

£389,000

Ashley Gardens, Waltham Chase, Southampton, SO32 2NQ

DRAFT DETAILS : We are awaiting verification from the Vendor that these details are correct



- Semi-Detached
- Family Home
- Four Bedroom
- Lounge
- Dining Room
- Kitchen
- Downstairs WC
- Family Bathroom
- Driveway with Carport
- Enclosed Rear Garden
- Energy Efficiency Rating:-
TBC

Awaiting EPC

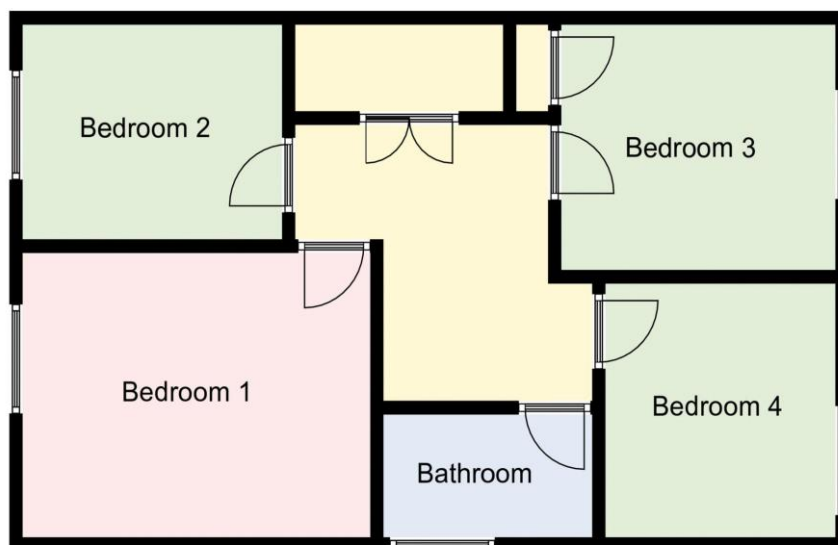
Property Reference : F2160

Council Tax Band: D

Floor Plans (For illustrative purposes and not drawn exactly to scale)



Ground Floor



First Floor

The Accommodation Comprises:-

Front door with obscured panel inset and to side into:-

Entrance Hall:-

Stairs to first floor, door to:-

Cloakroom:-

Close-coupled wc, wash hand basin, window to front.

Lounge:-

16' 3" x 13' 10" (4.95m x 4.21m) Maximum Measurements

Window to front, cupboard to under stairs storage, further cupboard for storage, radiator.



Kitchen:-

13' 10" x 7' 4" (4.21m x 2.23m)

Range of base and eye level units with roll-top work surfaces, one and a half bowl stainless steel sink unit with mixer tap, recess for oven with stainless steel splashback, recess for washing machine and dishwasher/tumble washer, recess for fridge/freezer, wall-mounted gas central heating boiler, door with window to side enjoying views and access the rear garden.



Dining Room:-

13' 1" x 10' 7" (3.98m x 3.22m)

door with window to side access the rear garden, radiator, space for table and chairs, double opening doors giving access to the lounge.



First Floor Landing:-

Cupboard housing hot water cylinder tank, further cupboard with shelving, storage, access to loft.

Bedroom 1:-

12' 10" x 12' 2" (3.91m x 3.71m)

Window to front elevation, radiator.



Bedroom 3:-

10' 1" x 8' 8" (3.07m x 2.64m)

Window to rear, cupboard for storage and helving.



Bedroom 2:-

9' 10" x 7' 7" (2.99m x 2.31m)

Window to front, cupboard for storage with shelving and cloaks hanging.



Bedroom 4:-

9' x 8' 6" (2.74m x 2.59m)

Window to rear, radiator.



Bathroom:-

Window to side, close-coupled wc, pedestal wash hand basin, panelled bath, long-line radiator, towel rail.



Outside:-

Lawns to the front, driveway leading to sheltered car port to the side of the property with pedestrian access to rear garden, laid mainly to lawn with block paving for sitting, socialising and entertaining purposes, two garden shed, enclosed by fence panels.



Disclaimer: These particulars are set out as a general outline in accordance with the Consumer Protection from Unfair Trading Regulations 2008 (CPR's) and Business Protection from Misleading Marketing Regulations 2008 (BPR's) only for the guidance of intending purchasers or lessees, and do not constitute any part of an offer or contract. Details are given without any responsibility, and any intending purchasers, lessees or third parties should not rely on them as statements or representations of fact, but must satisfy themselves by inspection or otherwise as to the correctness of each of them.

We have not carried out a structural survey and the services, appliances and specific fittings have not been tested. All photographs, measurements, floor plans and distances referred to are given as a guide only and should not be relied upon for the purchase of carpets or any other fixtures or fittings. Gardens, roof terraces, balconies and communal gardens as well as tenure and lease details cannot have their accuracy guaranteed for intending purchasers. Lease details, service ground rent (where applicable) are given as a guide only and should be checked and confirmed by your solicitor prior to exchange of contracts.

No person in the employment of Fenwicks Estates Ltd has any authority to make any representation or warranty whatever in relation to this property. Purchase prices, rents or other prices quoted are correct at the date of publication and, unless otherwise stated, exclusive of VAT.

Data Protection: We retain the copyright in all advertising material used to market this Property.

Money Laundering Regulations 2017: Intending purchasers will be required to produce identification documentation once an offer is accepted